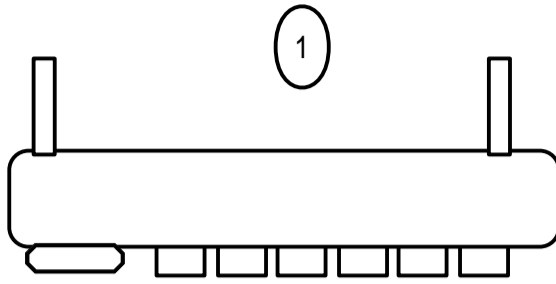


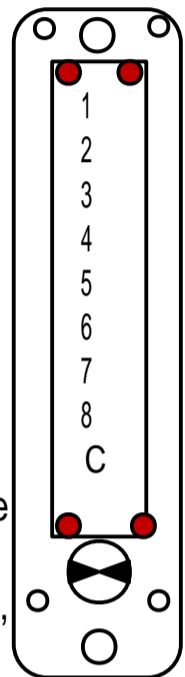
# Code change instructions

Take the lock front (if after fitting remove by undoing the 2 x fixing bolts from the lock back)

1) Turn the lock upside down



2) Remove the 4 x red screws from the plate and lift the plate off carefully



-Your code group can consist of from 4 to 6 digits

-Your code must always be pre-fixed by C to clear

-Although your code group is not sequential there are still over 8,000 different code groups

The Super 8 series has additional coloured code tumblers, these are green.

The green tumbler is used when you want to use a particular digit twice in your code ie C4418

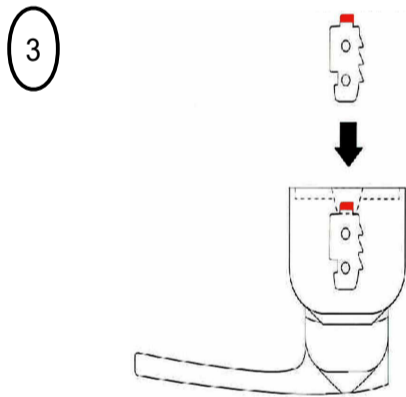
- The code is determined by the number of red & green tumblers used, blue are non-code.

- To increase your code add more red & green tumblers, to decrease add more blue

**-IMPORTANT**

**While removing & replacing the tumblers you must continue to depress the C button**

3) Using the tweezers provided move the red, green & blue tumblers to set your own code



The tumblers are shaped to fit into the slots

- The coloured tip **must** be facing upward

- The side of the tumbler that has the raised notches must face toward the top of the lock

**DO NOT** force the tumblers back in, **SIMPLY** keep the C button depressed and they will drop in, if one or more does not drop in make sure they are all positioned correctly, as per above and diagram (3)

Replace the plate and test your code prior to fitting on the door.

If refitting to an existing installation ensure you reposition the spindle at the correct angle as per 'Fitting your lock'